

eng_doc_2.pdf (WWW.kwmatik.cba.pl) ver.1.0

Interface USB-DMX512

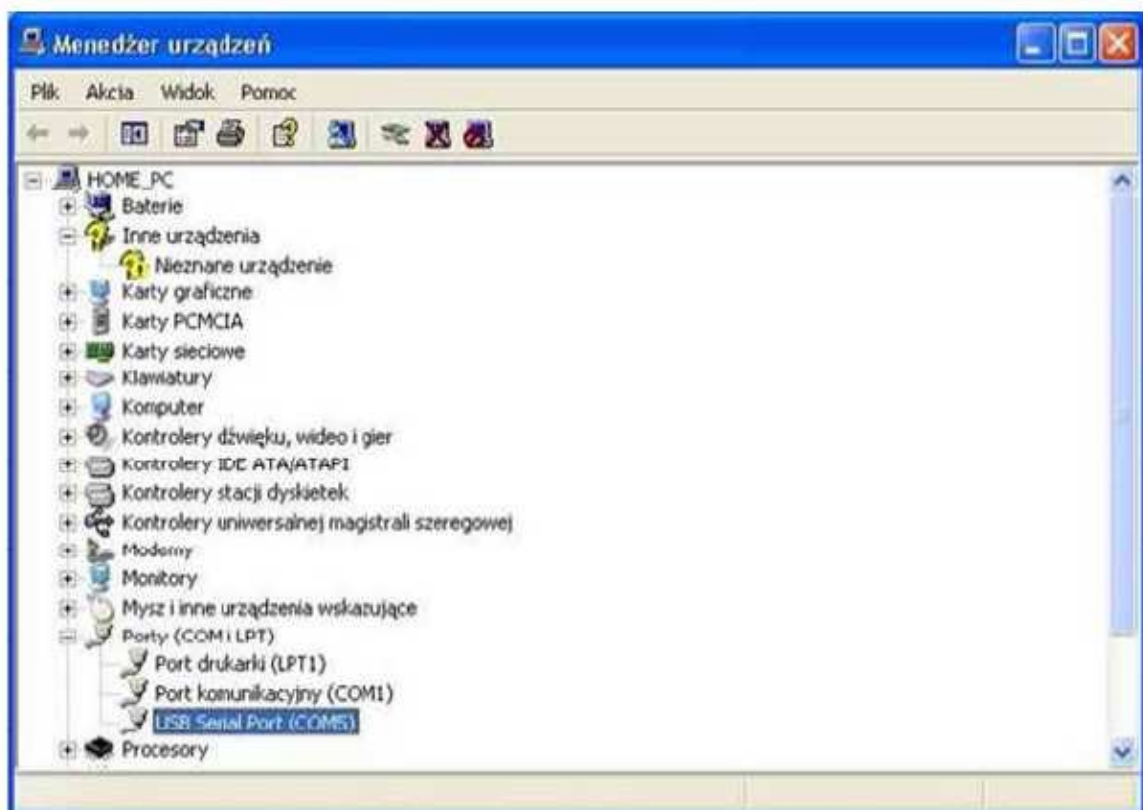
User's manual

1. System requirement

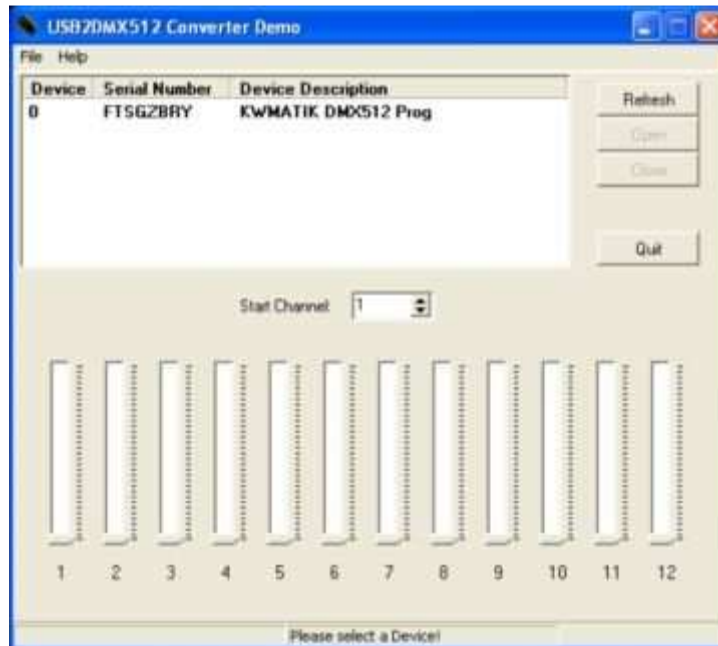
- Computer system requirement IBM PC/AT or compatible desktop with USB port.
- Operation system requirement: Windows 98 SE/ Windows 2000/ Windows XP/ Windows Vista, Windows 7
- No external power is required, powered by USB bus directly.

2. Driver Installation

- Be sure your computer support USB port.
- Be sure that USB ports work correctly.
- Do not plug in USB interface before driver installation.
- Startup Windows operation system, then choose driver for your operating system.
- Install driver: CDM26000.exe from <http://www.ftdichip.com/Drivers/D2XX.htm> or later
- After installation reset operation system (optional)
- Plug USB interface into USB port of the computer. The system will setup the driver automatically.
- After that, you will find a new COM port on Device Manager (Start/Control Panel/System/Hardware/Device Manager/Ports (COM&LPT)). It is named: USB SERIAL PORT (COM ##).



To check download and run **USB2DMX512 Converter Demo**
http://www.kwmatik.cba.pl/instr_dmx.html



Unpack and execute **USB2DMX512DEMO.exe**. After that click [refresh] and set device.

12 channels(start from value of [start channel] on bottom of screen are used to setting value 0-255

Interface In DMX software is detected automatically , if not set **(OPEN ENNTEC) option**

LINK to EXAMPLE SOFTWARE : http://www.kwmatik.cba.pl/down_dmx.html