

Manual how connect OPEN ENNTEC USB/DMX512 interfaces to Martin LJ 2.5

Activities to be carried out to adapt the converter to work with Martin LightJockey ver.2, 5

Warning!

If the converter is connected to the computer for the first time has to be done

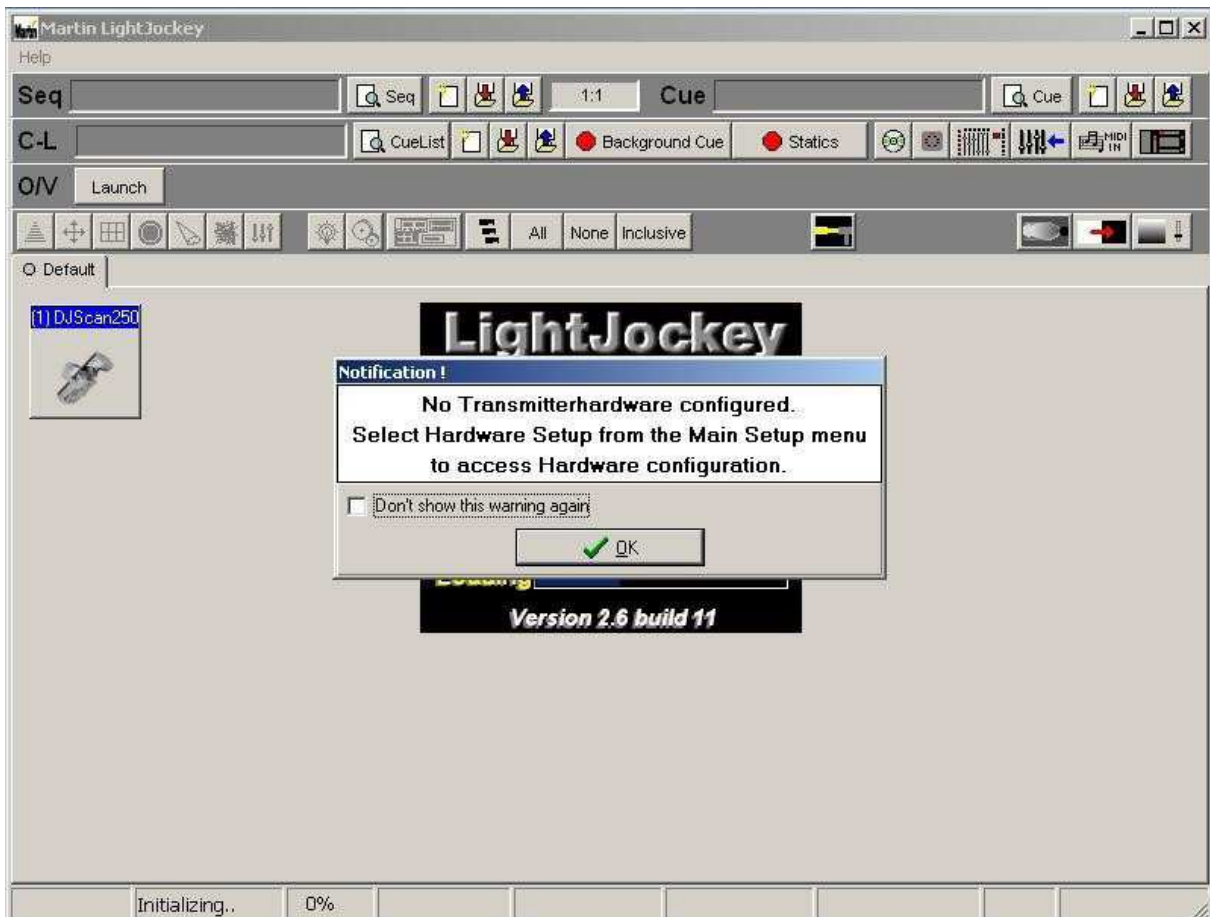
install its drivers. The procedure is described in a PDF file **USB to DMX512 Controller.pdf**

In the directory where you installed the program np.C: \ Program Files \ Martin

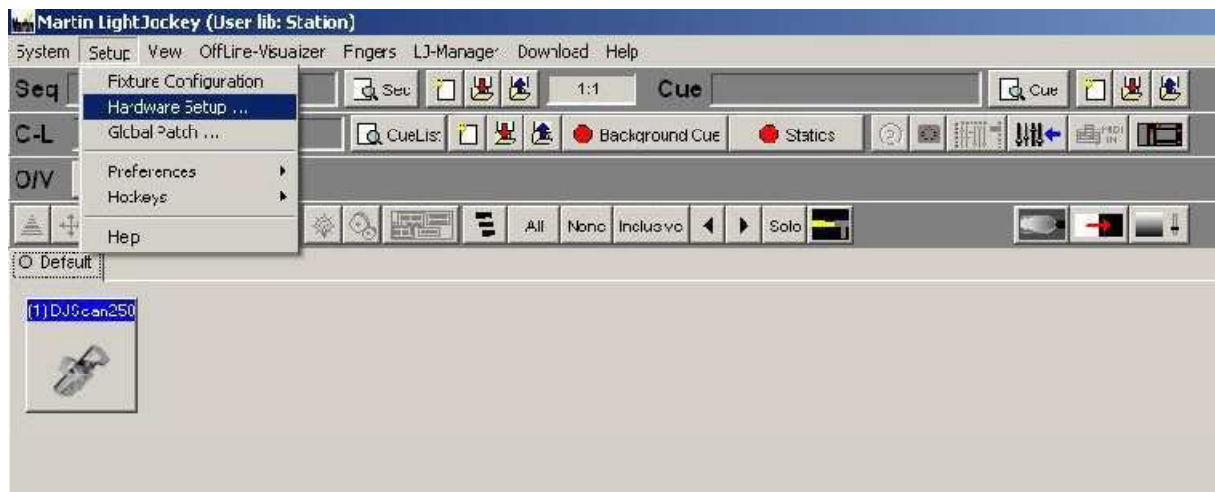
Professional \ Martin LightJockey rename the DasHard.dll -> MartinUSB.dll.

Then copy the two files from the directory Driver_LJ, they are FTD2XX.dll and MartinUSB.dll.

Then connect the USB-DMX converter to a computer and run LightJockey, following message will appear.



Finished, click OK to open the Setup tab click Hardware Setup



This opens the bookmark



click **Detect DMX Hardware** - opens the window below



Click Yes, the program will be restarted after a reboot is ready to work .

Diode Led is flashing on side of the interface USB/DMX512

Interface which Works with LightJockey ver.2, 5

www.kwmatik.cba.pl

<http://www.kwmatik.cba.pl/eng.html>

<http://www.kwmatik.cba.pl/dmx.html>